

**ITEM 39. PARKING – VARIOUS PARKING CHANGES – CASTLEREAGH
STREET SYDNEY**

TRIM RECORD NO: 2017/181973

RECOMMENDATION

It is recommended that the Committee endorse following reallocation of parking on the eastern side of Castlereagh Street, Sydney, south of Hunter Street:

- (A) Between the points 47.6 metres and 54.8 metres, as “Loading Zone Ticket 6am-3pm Mon-Fri 6am-10am Sat”, “Bus Zone 3pm-8pm Mon-Fri” and “4P Ticket 8pm-12am Mon-Fri 10am-10pm Sat 8am-10pm Sun & Public Holidays”.
- (B) Between the points 64.8 metres and 71.9 metres, as “No Parking”

VOTING MEMBERS FOR THIS ITEM

<i>Voting Members</i>	<i>Support</i>	<i>Object</i>
City of Sydney		
Roads and Maritime Services		
NSW Police – Sydney City LAC		
Representative for the Member for Sydney		

DECISION

BACKGROUND

The Applicant to demolish 12 Castlereagh Street for the Sydney Metro City and Southwest project will require the installation of a temporary driveway and the removal of a redundant driveway. The installation of a temporary driveway is required for construction truck access and the removal of the redundant driveway will reinstate and off-set the loss of on-street parking.

COMMENTS

The kerb space on the eastern side of Castlereagh Street, Sydney, south of Hunter Street, is currently a mixture of “No Parking”, “Loading Zone Ticket 6am-3pm Mon-Fri 6am-10am Sat”, “Bus Zone 3pm-8pm Mon-Fri” and “4P Ticket 8pm-12am Mon-Fri 10am-10pm Sat 8am-10pm Sun & Public Holidays”.

12 Castlereagh Street will be demolished as part of the Sydney Metro City and Southwest project. In order to demolish the building, the Applicant proposes to apply for a temporary driveway on Castlereagh Street. To offset the loss and limit the impact on parking, the approval of the temporary driveway will be subject to the Applicant removing the redundant driveway and reinstating footpath, kerb and gutter to reintroduce parking.

CONSULTATION

Through the Construction Traffic Management Plan (CTMP) for the demolition of 12 Castlereagh Street, the Traffic Control Group (TCG) for the Sydney Metro City and Southwest project is aware of the proposed parking changes.

The Applicant must notify adjacent properties and the TCG at least 7 days prior to the installation of the temporary driveway and the removal of the redundant driveway.

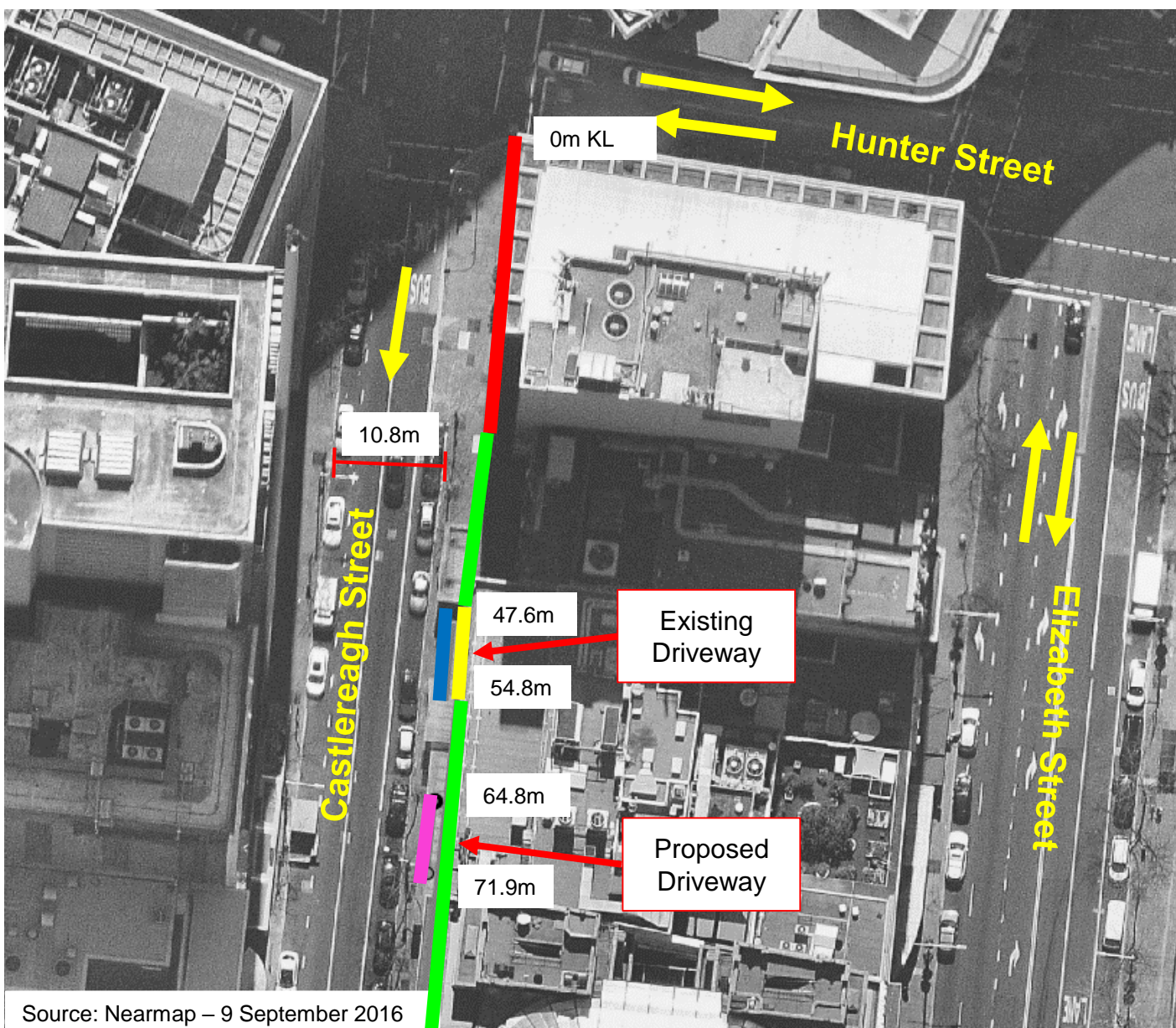
FINANCIAL

All costs associated with the Works Zone will be borne by the Applicant.

ATTACHMENTS

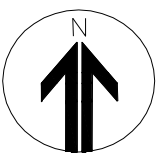
Parking – Various Parking Changes – Castlereagh Street Sydney

Tony Ly, Engineering Traffic Officer



Source: Nearmap – 9 September 2016

<p>Existing No Stopping</p> <p>Existing Loading Zone Ticket 6am-3pm Mon-Fri, 6am-10am Sat</p> <p>Bus Zone 3pm-8pm Mon-Fri</p> <p>4P Ticket 8pm-12am Mon-Fri, 10am-10pm Sat, 8am-10pm Sun & Public Holidays</p> <p>Existing No Parking</p>	<p>Proposed No Parking</p> <p>Proposed Loading Zone Ticket 6am-3pm Mon-Fri, 6am-10am Sat</p> <p>Bus Zone 3pm-8pm Mon-Fri</p> <p>4P Ticket 8pm-12am Mon-Fri, 10am-10pm Sat, 8am-10pm Sun & Public Holidays</p>
--	---



Proposal

Castlereagh Street, Sydney
Proposed Parking Changes



